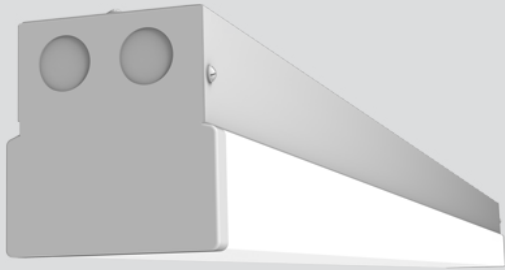


Client:	
Order #:	
Project:	
Type:	



PERFORMANCE DATA

CRI

80+

CCT

3500K,4000K

Projected Lifetime

140,000 Hours (L70);
90,000 Hours (L80)

Dimming

0-10V Dimming Standard,
100% down to 10%

Operating Temperature

-20°C to 40°C Ambient

UL Listed

CULUS, Suitable for dry and damp locations

Warranty

5 year Standard
10 year Optional

DESCRIPTION

The RCH-S square luminaire is a functional and multi-purpose LED channel fixture that incorporates premium performance with durable construction. Next-generation performance (delivering up to 138 lumens per watt) and application versatility makes this fixture usable in nearly any interior lighting application. The RCH-S square series can be the illumination solution in commercial, industrial, institutional and retail applications. The luminaire is designed to illuminate storage/utility areas, coves, display cases, shops, task areas and general area lighting. Mounting accessories on Page 3.

FEATURES

- Die formed channel.
- Powder coated white enamel finish after fabrication.
- Numerous KOs for easy installation.
- Also available in tandem 8' lengths, & tandem wired 16' lengths.
- UL listed for damp location
- LED driver is 0-10V dimming standard.
- Operating Temperature: -20°C to 40°C Ambient
- OPTICS: Architectural frosted diffuse lens eliminates pixelation, improves uniformity and minimizes glare.
- Performs at up to 138 lumens per watt; CRI: 83+
- L70 Lifetime Rating: 106,000 Hours
- E - Emergency backup to provide 16W (2000 Lumens) MAX load for 90 min.

ORDERING INFORMATION

RCH-S										
	B	C	D	E	F	G	H	I	J	

A	FIXTURE SERIES	
	RCH-S	Square Architectural LED Channel Luminaire
B	LENGTH	
	4	4'
	8	8'
C	WATTAGES/LUMENS (4')	
	35	35W/4600 ¹
	WATTAGES/LUMENS (8')	
	65	65W/8500 ¹
D	CCT	
	35	3500K
	40	4000K
E	VOLTAGE	
	U	120-277V
F	DIMMING	
	D	0-10V Dimming ²

G	BODY TYPE	
	O	One-Piece Lens (8-ft units only) ³
H	PAINT FINISH	
	W	White
I	OPTIONS	
	E	Emergency
	M	Motion Sensor ⁴
J	WARRANTY⁵	
	BLANK	5 Year Warranty
	10	10 Year Warranty
	10L	10 Year Warranty including labor

¹ Delivered Lumens (4000K)

² Standard for Fixture

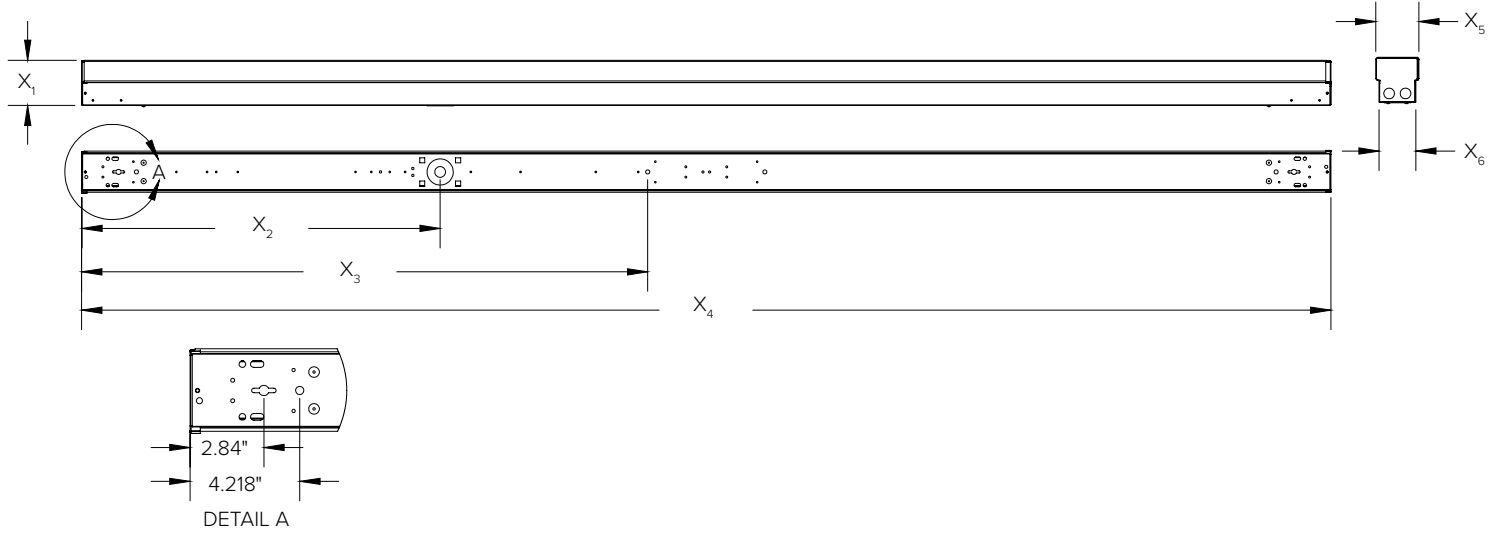
³ Only applies to 8-ft models. Indicates single 8-ft unit rather than two 4ft units connected together
⁴ FSP-211 Motion Sensor (see Page 3 for more information on features and benefits)

⁵ 5 Year Warranty is Standard unless specified



DIMENSIONS

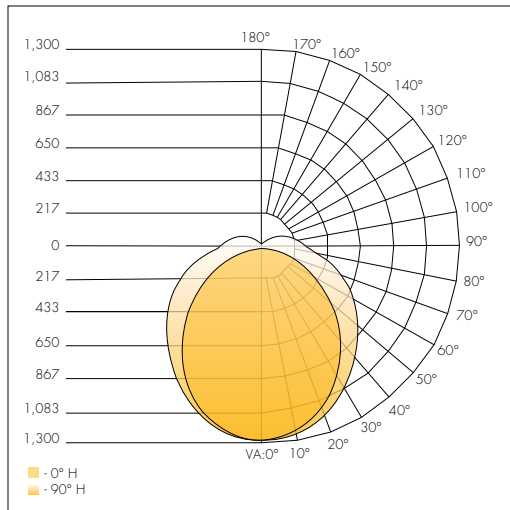
	X ₁	X ₂	X ₃	X ₄	X ₅	X ₆
4'	3.49"	24.061"	n/a	48.121"	3.307"	2.811"
8'	3.457"	27.557"	43.549"	96.114"	3.307"	2.823"



PHOTOMETRIC

POLAR GRAPH

4' 35W 4000K



COEFFICIENTS OF UTILIZATION - ZONAL CAVITY METHOD

Effective Floor Cavity Reflectance 0.20

RC	80				70				50			30			10			0
	70	50	30	10	70	50	30	10	50	30	10	50	30	10	50	30	10	0
0	1.16	1.16	1.16	1.16	1.12	1.12	1.12	1.12	1.04	1.04	1.04	.97	.97	.97	.90	.90	.90	.97
1	1.04	.98	.93	.89	1.00	.95	.90	.70	.90	.84	.81	.82	.79	.76	.76	.74	.72	.69
2	.94	.85	.77	.71	.90	.82	.75	.57	.76	.71	.66	.71	.66	.62	.66	.62	.59	.56
3	.85	.74	.65	.59	.82	.71	.64	.48	.67	.60	.54	.62	.57	.52	.58	.53	.49	.47
4	.78	.65	.56	.49	.74	.63	.55	.41	.59	.52	.46	.55	.49	.44	.51	.46	.42	.39
5	.71	.58	.49	.42	.68	.56	.48	.36	.53	.45	.40	.49	.43	.38	.46	.41	.36	.34
6	.66	.52	.43	.37	.63	.51	.42	.31	.48	.40	.35	.45	.38	.33	.42	.36	.32	.30
7	.61	.47	.38	.32	.59	.46	.38	.28	.43	.36	.31	.42	.34	.29	.38	.33	.28	.26
8	.57	.43	.35	.29	.54	.42	.34	.25	.39	.32	.27	.37	.31	.26	.35	.30	.25	.23
9	.53	.40	.31	.26	.51	.38	.31	.22	.36	.29	.24	.34	.28	.24	.32	.27	.23	.21
10	.50	.36	.29	.23	.48	.35	.28	.20	.34	.27	.22	.32	.26	.21	.30	.25	.21	.19

LUMEN CHART

Model	System Wattage	4000K	3500K
4' 35W	33.5	4600	4450
8' 65W	62.3	8500	8200

ZONAL LUMEN SUMMARY

Zone	Lumens	%Luminaire
0-30	984.0	21.5%
0-40	1,596.9	34.9%
0-60	2,829.3	61.9%
50-90	1,142.4	25%
70-100	818.1	17.9%
90-120	433.2	9.5%
0-90	3,971.8	86.9%
90-180	599.7	13.1%
0-180	4,571.4	100%

PROJECTED LED MAINTENANCE

Operating Hours	0	25,000	50,000	75,000	100,000
	25°C (77°F) Ambient Outdoor Temp				
Lumen Maintenance Factor	1	0.93	0.85	0.78	0.72
	45°C (113°F) Ambient Outdoor Temp				
	1	0.91	0.82	0.73	0.66

ACCESSORIES (ORDERED AND SHIPPED SEPARATELY)

Mounting

5011003-6	V-hook and Aircraft Cable Suspension Kit - 6'
5011003-10	V-hook and Aircraft Cable Suspension Kit - 10'

STEP DIMMING & BI-LEVEL

FSP-211

The FSP-211 mounts in an outdoor lighting fixture and provides multi-level control based on motion. The sensor also includes a photocell to measure the ambient light level. It controls 0-10 VDC LED drivers or dimming ballasts, as well as non-dimming ballasts and, with an SFP-LX Lens, is rated for wet and cold locations. All control parameters are adjustable via a wireless configuration tool capable of storing and transmitting sensor profiles.

Key Factors

- Fully adjustable high and low dimmed light levels.
- Designed for LED fixtures; rated for extreme temperatures and up to 200,000 on/off cycles
- Hold off setpoint with automatic calibration option for convenience and added energy savings
- Adjustable via handheld wireless configuration tool
- IP66 rated with choice of lenses for wet and outdoor locations, and mounting heights from 8' to 40'
- Adjustable time delay and cut off delay



STEP DIMMING & BI-LEVEL

Brand	EASEIC	LEVITON
Models	EID110U	AWSMT716