

Client:	
Order #:	
Project:	
Type:	

PERFORMANCE DATA

CRI

80+

CCT

3500K,4000K, 5000K

Projected Lifetime

173,000 Hours (L70);
50,000 Hours (L90)

Dimming

0-10V Dimming Standard

Operating Temperature

-30°C to 52°C Ambient (-22F to +125°F)

UL Listed

UL, Suitable for dry and damp locations

Warranty

5 year Standard
10 year Optional

DESCRIPTION

The RHL is an innovative interior high bay lighting luminaire that delivers top-end performance packaged into a sleek form factor. This low-profile linear high bay/low bay luminaire offers commercial and industrial building owners an all-in-one solution for illuminating their facility while drastically reducing energy consumption to aid their bottom line. The RHL high bay luminaire features top-quality construction, a range of lumen packages, and various control options that make it a versatile solution for commercial and industrial building owners looking to upgrade to next-generation LED technology. Delivers up to 130lm/W.

FEATURES

Optical System

- Reflector systems features highly reflective coating, delivering adequate light for high ceiling applications.
- Diffuser lens reduces glare and improves occupant working conditions while maintaining high efficiencies.

Construction

- Rugged and durable construction withstands warehouse environments with an IP54 rating. Luminaire features durable, matte white finish.

Installation/Mounting/Construction

- Various mounting options available, including suspension, pendant, and surface mount. V-hook hangers and chain accessories available

Electrical

- Luminaire utilizes high-efficacy LED packages running at low operating temperatures for extended fixture lifetime.
- Universal voltage (120-277V) for convenient installation, 347 & 480V Optional
- Comes equipped with luminaire quick-disconnect.

ORDERING INFORMATION

RHL									
	B	C	D	E	F	G	H	I	

A	FIXTURE SERIES	
	RHL	Low Profile LED Linear High/Low Bay
B	LENGTH	
	2	2'
	4	4'
C	WATTAGES/LUMENS (2')	
	65	65W/9300 ¹
	90	90W/13050 ¹
	135	135W/19300 ¹
	178	178W/25000 ¹
	WATTAGES/LUMENS (4')	
	260	260W/37400 ¹
D	CCT	
	354050	3500K-4000K-5000K
E	VOLTAGE	
	U	120-277V

F	LENS	
	F	Frosted
G	OPTIONS	
	E	Emergency ²
	0	Occupancy Sensor
H	MOUNTING	
	See accessories table on page 3	
I	WARRANTY³	
	BLANK	5 Year Warranty
	10	10 Year Warranty
	10L	10 Year Warranty including labor

¹Delivered Lumens (4000K). For full lumen chart please see page 3

²Max ambient temperature is 50°C

³5 year standard unless specified



ADDITIONAL FEATURES

Optical System

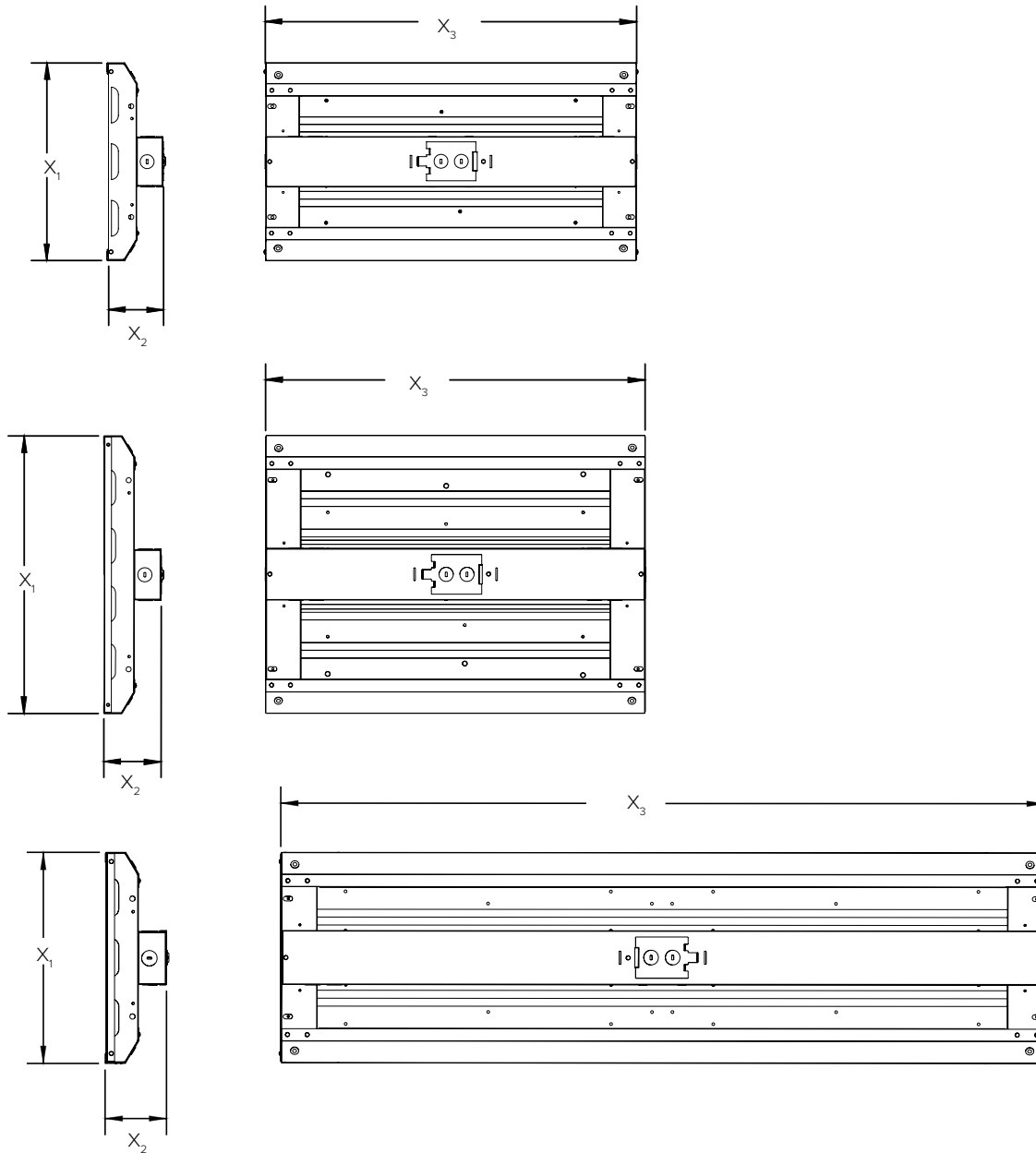
- Continuous dimming (0-10V) comes standard.
- Suitable for use with dimmers, sensors, daylight harvesting and other control strategies to achieve deeper energy-savings and code compliance.

Installation/Mounting/Construction

- UL Listed, suitable for Dry and Damp locations (not Wet location)
- UL Class 2 Driver: SCP, OTP, OVP protection, FCC Part 15 Class B, UL8750 Class 2.

DIMENSIONS

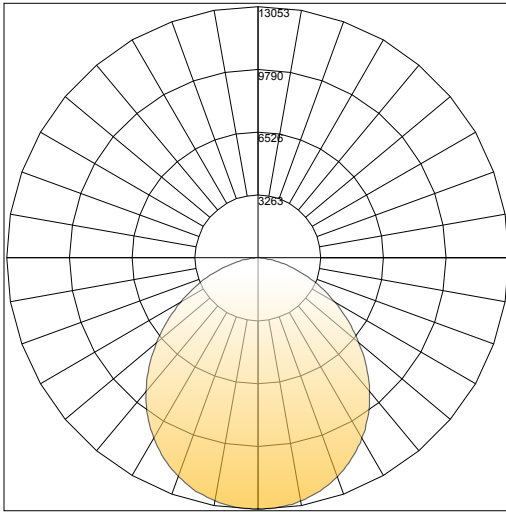
	X ₁	X ₂	X ₃
65W/90W	12.66"	3.62"	23.81"
135W/178W	17.37"	3.62"	23.81"
260W	12.69"	3.69"	45.87"



PHOTOMETRIC

POLAR GRAPH

4' 260W 3500K/4000K/5000K



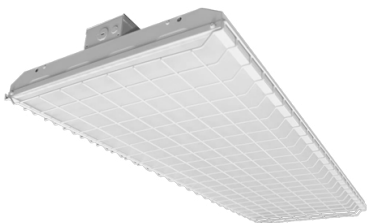
LUMEN CHART

Size	Watts	Lumens			LPW		
		3500K	4000K	5000K	3500K	4000K	5000K
2'							
	65	8500	9300	8700	131.3	143	134
	90	11900	13050	12100	132.7	145	135
	135	17700	19300	17900	131.1	143	133
4'	175	23000	25000	23400	131.5	143	134
	260	34450	37400	35100	132.5	144	135

ACCESSORIES (ORDERED AND SHIPPED SEPARATELY)

OPTIONS	
RHL-WG-2-4L-H	2' 4-Lamp Wire guard for RHL High bay (65W,90W Housing)
RHL-WG-2-6L-H	2' 6-Lamp Wire guard for RHL High bay (135W, 178W Housing)
RHL-WG-4-3L-H	4' 3-Lamp Wire guard for RHL High bay (260W)
MOUNTING	
RHL-2-4L-SU-H	Surface Mount Kit For High-bay Flat Panel (2pc) Set (65W, 90W, 260W Housing)
RHL-2-6L-SU-H	Surface Mount Kit For High-bay Flat Panel (2pc) Set (135W, 178W Housing)
RHL-HOOK-2-4L-H	V HOOK Mounting Kit High-bay Flat Panel (2 per) (65W, 90W, 260W Housing)
RHL-HOOK-2-4L-H	V HOOK Mounting Kit High-bay Flat Panel (2 per) (135W, 178W Housing)
RHL-CHAIN-1M-H	Mounting Chain For High-bay Flat Panel, 36" (Must Be ordered with V-HOOK)
RHL-CENTER BOX-H	Mounting Center Box For High-bay Flat Panel 20 Gua. (For Stem Use)
S12 (Part#290125 & C545Wht)	12" 3/8" IPS Stem Gloss White (5/8" OD) (Must be ordered w/ RHL-CENTER BOX)
S18 (Part#290138 & C545Wht)	18" 3/8" IPS Stem Gloss White (5/8" OD) (Must be ordered w/ RHL-CENTER BOX)
S24 (Part#290182 & C545Wht)	24" -3/8 IPS Stem Gloss White (5/8" OD) (Must be ordered w/ RHL-CENTER BOX)
S36 (Part#290137 & C545Wht)	36" 3/8" IPS Stem Gloss White (5/8" OD) (Must be ordered w/ RHL-CENTER BOX)
S48 (Part#290126 & C545Wht)	48" 3/8" IPS Stem Gloss White (5/8" OD) (Must be ordered w/ RHL-CENTER BOX)
DEC4011003-6	Universal Yoke and Toggle Aircraft Cable Suspension Kit 6'
DEC4011003-10	Universal Yoke and Toggle Aircraft Cable Suspension Kit 10'
DEC4011003-15	Universal Yoke and Toggle Aircraft Cable Suspension Kit 15'

WIRE GUARD



OCCUPANCY SENSOR



- Includes two lenses
- 30' range sensitivity detector
- Pre-stripped color coded wire leads
- Uses infrared energy as its control signal source
- Smart timing detection logic

