



Client:	
Order #:	
Project:	
Type:	

DESCRIPTION

Discover OpticBay, the epitome of sleek design and high-quality optics. Its slim profile and sophisticated aesthetics make it perfect for a variety of applications. Designed with a tool-less easy access wiring compartment, OpticBay simplifies installation, making it an ideal choice for warehouses, supermarkets, and more.

OpticBay is the ultimate solution for both new constructions and retrofits. Its low-profile design not only offers energy savings and low maintenance but also provides versatile control options for both low and high bay settings in industrial, commercial, and retail spaces. Experience the perfect blend of style and efficiency with OpticBay from REVO Lighting.

FEATURES

• LISTING
UL and CUL listed

HOUSING
Housing made of high quality aluminum with high reflectance paint to provide high lumen output.

AMBIENT TEMPERATURE
Suitable for use in -40°C to +50°C

• EFFICACY
Up to 165 lumens per watt (see individual wattage data)

• OPTICS
Diffuse lens provides superior uniformity

• ELECTRICAL
Standard universal 120-277VAC input
4KV Surge protector per ANSI/IEEE C62.41
Standard 0-10VDC dimming driver

• FINISHES
Polyester powder coat white finish, multi-stage process produces 3mil thickness for superior corrosion and maximum environmental durability.

PERFORMANCE DATA

CRI

80+

CCT

4000K, 5000K

Projected Lifetime

>134,000 Hours (L70)
>40,000 Hours (L90)

Dimming

0-10V Dimming Standard,
10% down to 100%

Operating Temperature

-40°C to +50°C Ambient

Warranty

5 year Standard
10 year Optional

ORDERING INFORMATION

OPTICBAY		B	C	D	E	F	G	H
A	FIXTURE SERIES	OpticBay	LED HIGH BAY	C	CCT	G	FACTORY INSTALLED CONTROL OPTIONS²	
					40	4000K	AVI-LVFA	Avi-on wireless fixture control
B	WATTAGE/LUMENS OpticBay 2-2FT	100	100W/16198 ¹		50	5000K	AVI-LVFA-PIR-ELB	Avi-on wireless fixture control with PIR motion and daylight sensor, end mount
		155	155W/24568 ¹	D	VOLTAGE		H	WARRANTY³
	WATTAGE/LUMENS OpticBay 4-2FT	220	220W/36000 ¹		U	120-277V	-	5 Year Warranty
		300	300W/45000 ¹		H	347/480V	10	10 Year Warranty
	WATTAGE/LUMENS OpticBay 2-4FT	220	220W/36000 ¹	E	FINISH		10L	10 Year Warranty including labor
		300	300W/45000 ¹		WH	White		
	WATTAGE/LUMENS OpticBay 4-4FT	220	220W/36000 ¹	F	MOUNTING			
		300	300W/45000 ¹		VH	V-Hook		
	WATTAGE/LUMENS OpticBay 4-4FT	420	420W/58000 ¹		P	Pendant		
					AIR	Aircraft Cable		

¹ Delivered Lumens (5000K)

² See Page 3

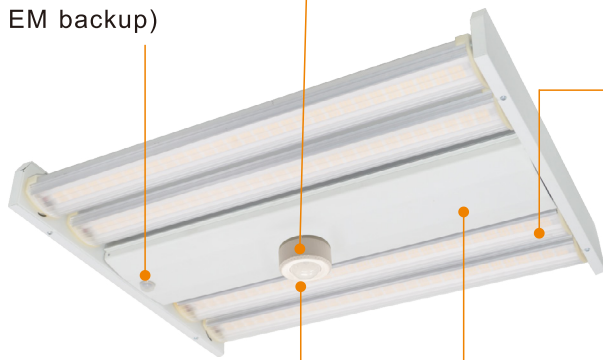
³ 5 Year Warranty is Standard unless specified

Emergency system test switch
(included with optional
EM backup)

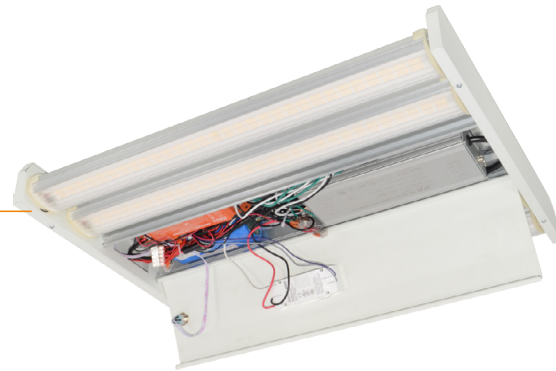


Easy access for 3-level
wattage tuning

Diffuse lens with high optical efficiency (90%) allow for
high efficacy while providing wide coverage and uniformity
for any application



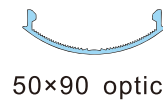
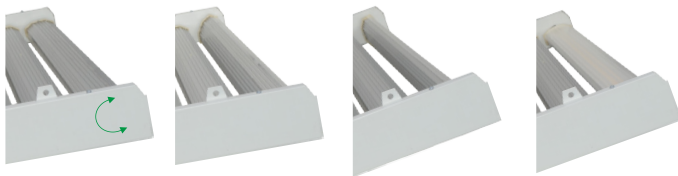
Easy access to all the
sensor controls



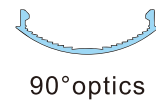
Tool-less entry simplifies the installation process



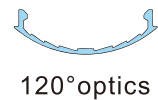
Outer light bars are 180° adjustable for applications
requiring up-light capability



50×90 optics



90° optics



120° optics



V-Hook



Pendant



Aircraft Cable



Optional occupancy external sensor



OpticBay 2-2FT



OpticBay 4-2FT

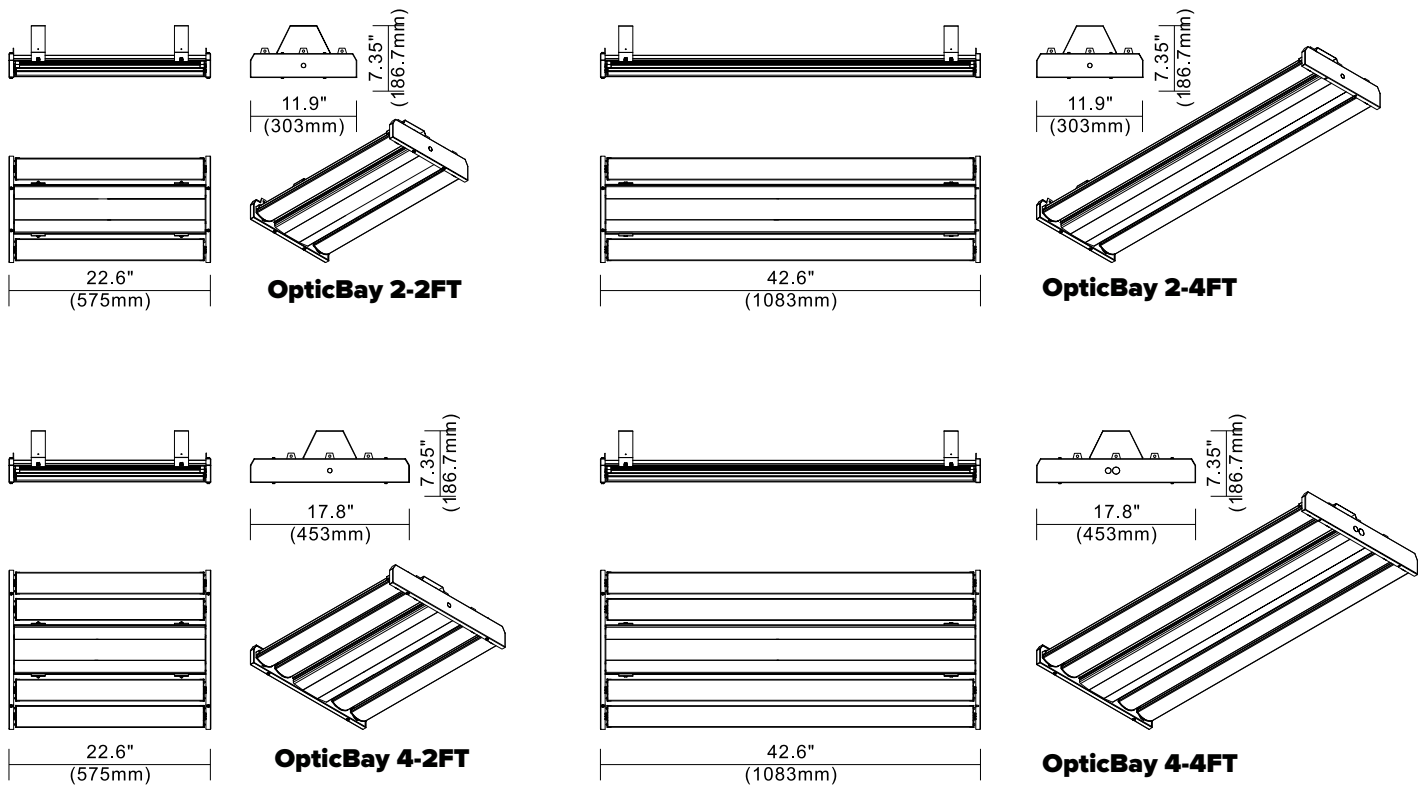


OpticBay 2-4FT



OpticBay 4-4FT

DIMENSIONS



SENSOR AND CONTROLS ORDERING INFORMATION

Integrated in Fixture Body:

VL40B=

Vealite Keilton: PIR Occupancy Sensor, Photosensor, High and Low End Trim, 0-10V Dimming, IR Remote Programmable10

VBM40B=

Vealite Keilton Bluetooth Mesh: Wireless Fixture Controller, PIR Occupancy Sensor, HIGH/LOW/OFF, 0-10V Dimming, Daylight Harvesting, High End Trim, Luminaire Level Lighting Control, Wireless Zones, Time-of-Day Scheduling, Keilton Mobile App Programmable

WSxxB=

Wattstopper PIR Occupancy Sensor, HIGH/LOW/OFF, 0-10V Dimming, Switching Photosensor, IR Remote Programmable, 360° 9, 10

EN2=

Enlighted Connected Lighting Sensor: Network Lighting Control Component, PIR Occupancy Sensor, Daylight Harvesting, High End Trim, Dimming Modes, Luminaire Level Lighting Control, Wireless Zones, Modified IEEE 802.15.4.1, BLE Radio, Temperature Sensor, Scene Control, Demand Response, Data Collection, BMS Integration, Cloud Access

EN3=

Enlighted IoT:

All Features of EN2 - PLUS access to Apps: Space Management, Asset Tracking, and Contact Tracing Apps

End Mounted:

LV40=

Leviton OSFHU: PIR Occupancy Sensor, ON/OFF, Manual Programmable, 20 & 40 ft. Lenses

LD40=

Leviton HB011: PIR Occupancy Sensor, Daylight Harvesting, 0-10V Dimming Modes, Manual Programmable, 20 & 40 ft. Lenses11

WBxx=

Wattstopper FSP-3x1: PIR Occupancy Sensor, Daylight Harvesting, High and Low End Trim, 0-10V Dimming, Bluetooth Mobile App Programmable9